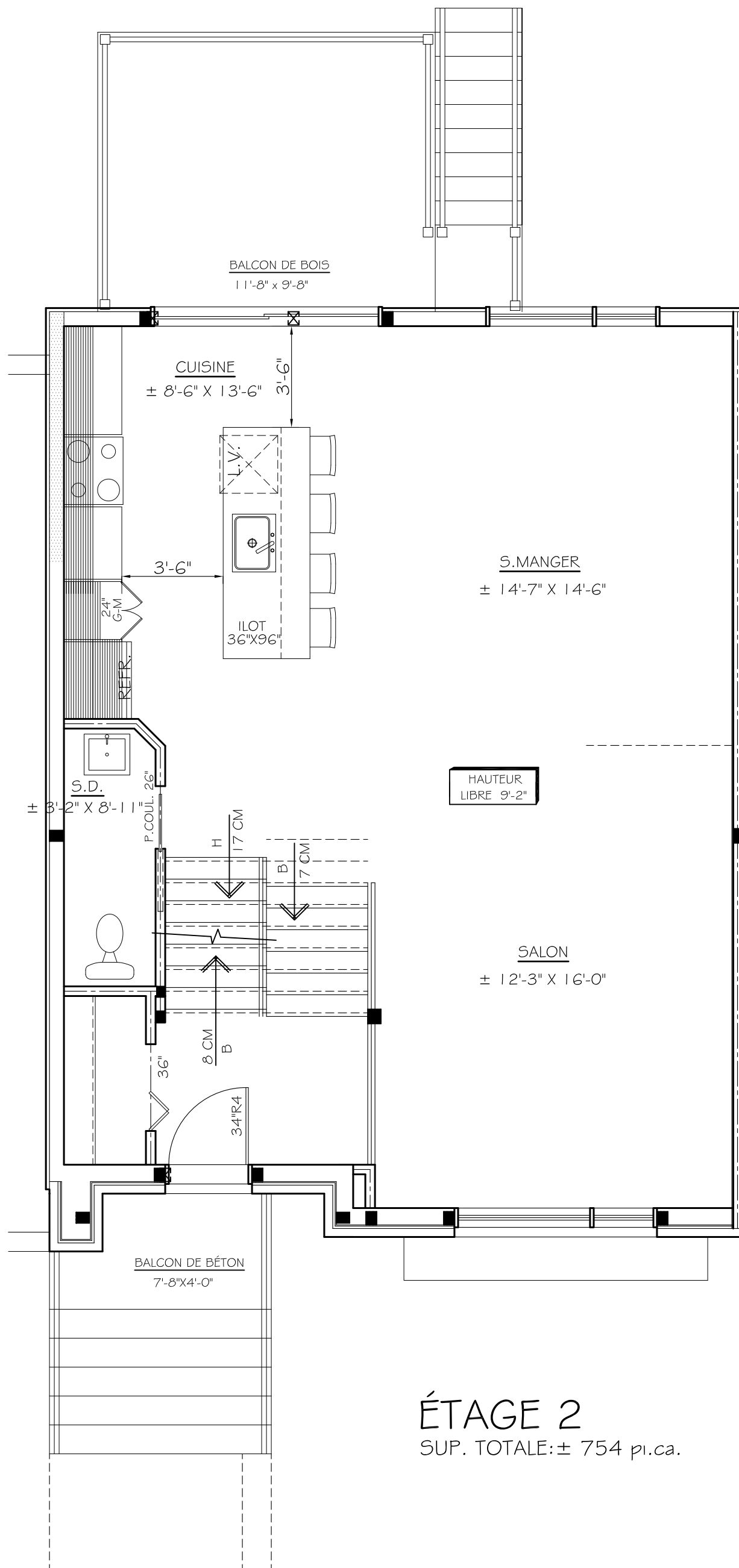
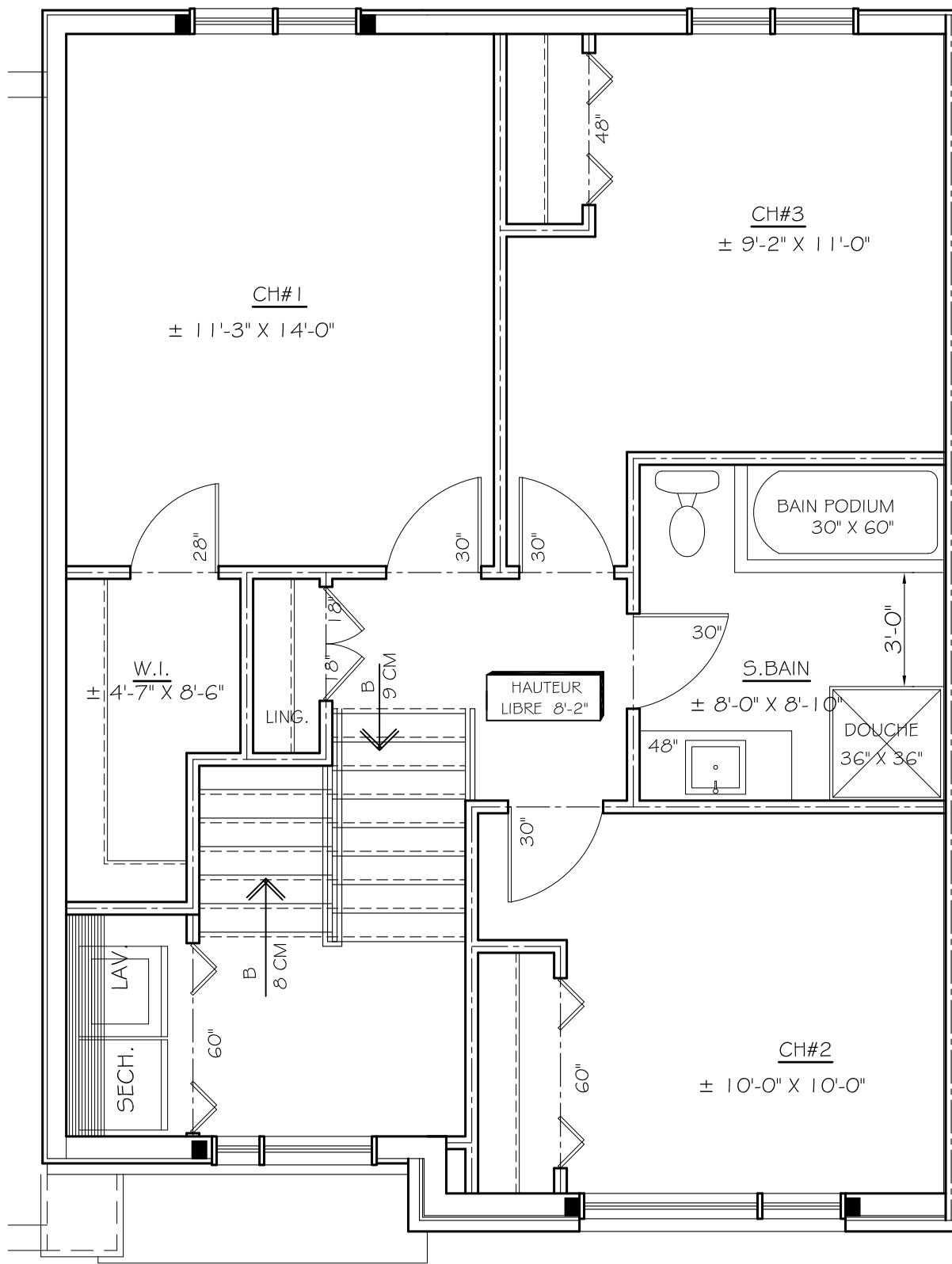


ÉTAGE I

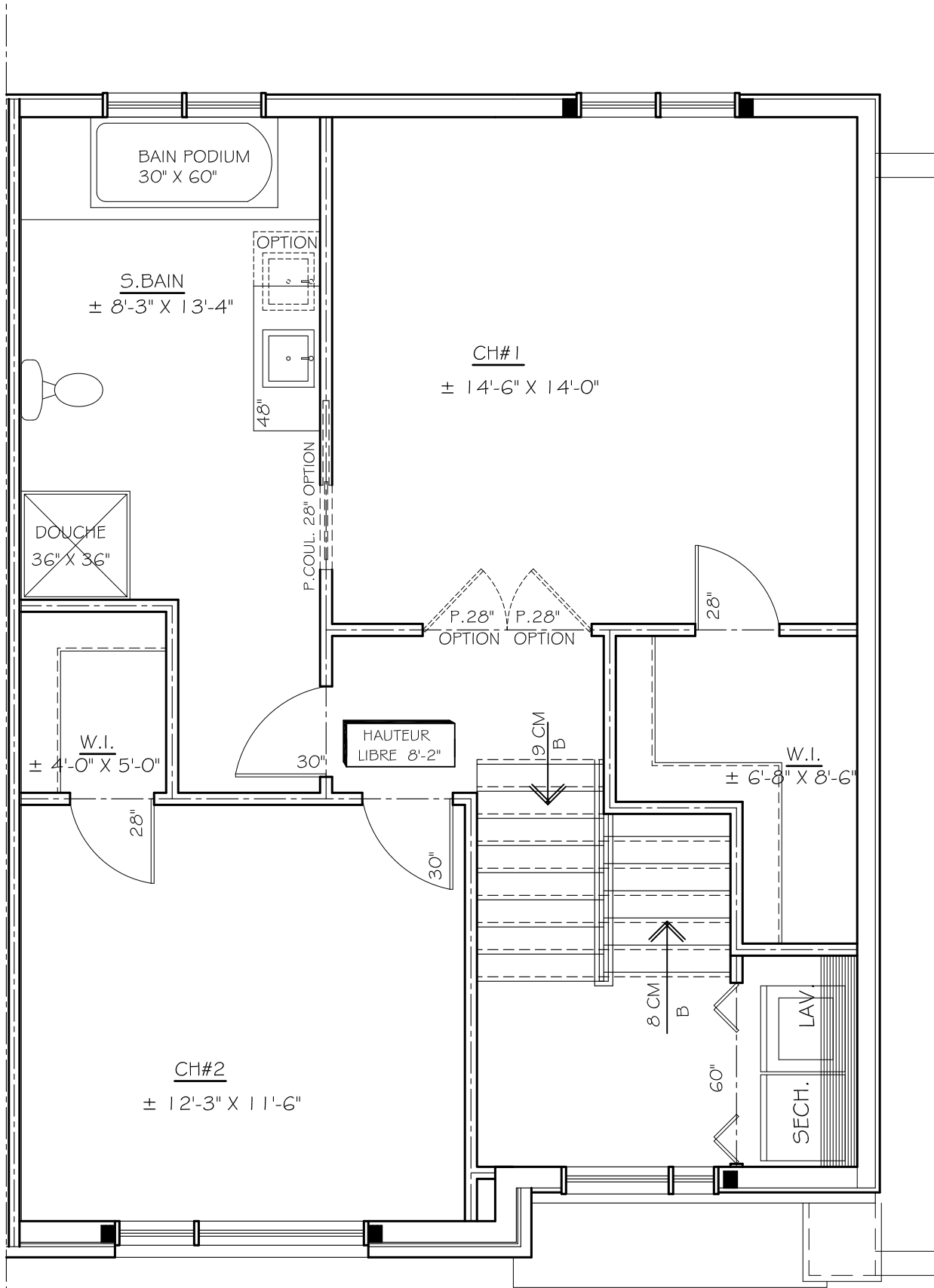
SUP. TOTALE: ± 756 pi.ca.
 GARAGE: ± 254 pi.ca.



ÉTAGE 2
SUP. TOTALE: ± 754 pi.ca.



ETAGE 3
 SUP. TOTALE: ± 754 p.c.a.



ETAGE 3
 SUP. TOTALE: ± 754 pl.ca.